

BULLETIN NO: 72 RELEASE DATE: 1st January 2021

A potted history of our building project.



Monday 13th January 2020

Andrew Etchingam, Matrod Frampton's Managing Director accepts the keys to the old building from Pastor Tim Gamston.



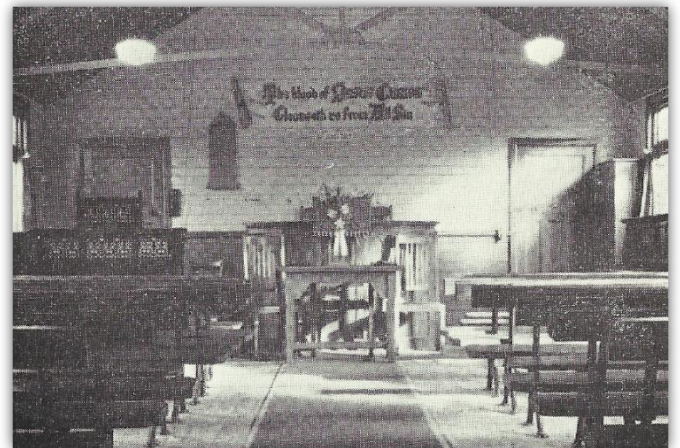
Thursday 12th December 2020

Tim Frampton, Matrod Frampton's Contracts Manager hands the keys to the new building to Pastor Tim & Brian Rawlings

There has been an evangelical church on the site in York Road, Broadstone, since 1933, first located at the bottom of the slope, formerly known as Baileys Hill. The actual position of that first timber framed building is now occupied by the right hand, semi-detached property adjoining the manse. Initially it was Elim Pentecostal and then in 1945, under Pastor Harry Rogers, it became an Evangelical Free Church.



Broadstone Evangelical Free Church
York Road - Photograph Circa 1945



Broadstone Evangelical Free Church
Late 30s shot inside "The Tabernacle"

Then in 1974 a pre-cast, concrete building was erected at the top section of the hill, which has served for the past 46 years, although portacabins were needed to accommodate youth activities.



In 2007, with the church congregation of adults and children still growing and the Marley style building showing its age, the diaconate, together with the church members, took the decision to initiate a project to create a totally new, much larger church facility. When completed, the new church complex facility would create a modern, attractive and flexible facility, to enable us to better serve the community and continue to reach out with the Gospel.

Designs were submitted, discussed at length, architects were selected, finalised drawings were put before Poole Council and planning permission was granted.



The design made very clever use of the flat and sloped elements of the site to give us a double-storey building linked to a larger worship hall. The layout of the complex also allowed for construction in two major phases, which was to prove greatly beneficial. Funding began in earnest and by the close of 2007 we had £4930 in the new building fund bank account. We were up and running and by the end of 2008 we were up to £36,102, even after paying the first invoice from the architects!

Poole Council eventually granted planning permission and when funds allowed, Raymond Brown the builders moved onto the site to break the first ground. Can you work out the stairway down to the lower hall?



Phase One or the "Community Building" as we came to call it, was joyfully opened for use in April 2015. This building, with its upper lounge, large catering-style kitchen, lower lounge, toilets and shower provided excellent, new, much-needed facilities for catering, meetings and hosting outreach events.



Our attention then quickly focussed on getting the larger worship hall and foyer built and with our building fund pretty much zeroed, we stepped out in faith once again.

Throughout the project, the vast majority of the money came from the gracious and unconditional giving by the church family itself, both monthly and on specific gift days. Other funding came from other churches, individuals and Christian charitable trusts. The church is also immensely grateful to the Talbot Village Trust, who gave the project extra momentum via a sizeable donation.



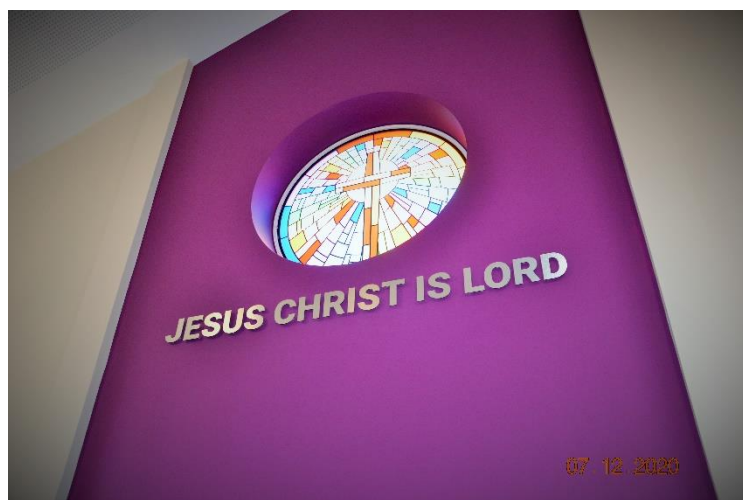
The above are the main churches and charitable organisations who came to our aid with donations and grants. We are extremely grateful for their generosity and we continue to give thanks to God for his grace through all these people and means.

By early 2019 funding had reached a level where we had confidence to discuss a contract with Matrod Frampton, our Wimborne based builder of choice. So it was that in December 2019, we evacuated the hall that had served so well for 45 years and in January 2020, site clearance and demolition were underway, ready for the surveyors to set out the limits of the new building.



Externally, the new building hall looks resplendent in classic Bath stone blockwork, with a central section of the front elevation clad in “Winter Sky” horizontal panels to accentuate the seven-metre-high ridge roof.

Mounted on the upper section of the cladding is a bespoke, full size, wooden cross, crafted by Clive Baines, one of our elders, who has cabinet making workshops in Dorchester. The locally sourced oak has been wrought, scorched and wire brushed to bring out the grain. It is back lit with LED lighting around its perimeter and stands as a reminder of Christ’s resurrection.



Entering the building, the spacious foyer gives direct access to the phase one community building, the stairs to the upstairs offices/meeting rooms and of course the new worship hall. It's the proportions of the interior of the hall that make an instant but lasting impression. With a floor area of 160 square metres a large congregation can easily be accommodated and the ceiling, at a height of seven metres, is layered with acoustic panels to enhance sung worship.

The focal point within the hall is the large porthole window, centrally located on the rear wall, high up close to the apex. The bespoke artwork for the glass features a spectrum of vibrant colours, asymmetrically arranged with the cross of our Lord central to the theme. The segments around the outer circumference ring display the colours of the rainbow, starting with red at the 12 o'clock position, round to violet at

11 o'clock. *"I have set my rainbow in the clouds, and it will be the sign of the covenant between me and the earth"* Genesis 9 v 13 NIV

With the two phases now merged into a large, single, three storey building Broadstone Baptist now has all the space for collective worship and facilities to serve all ages in the local community in a variety of ways.



Jesus said:- **"And I tell you, you are Peter, and on this rock I will build my church, and the gates of hell shall not prevail against it."** Matthew 16 v 18 ESV

Mission accomplished now the real mission begins.