

BULLETIN NO: 63 RELEASE DATE: 28th November 2020

No prizes for guessing the founder!

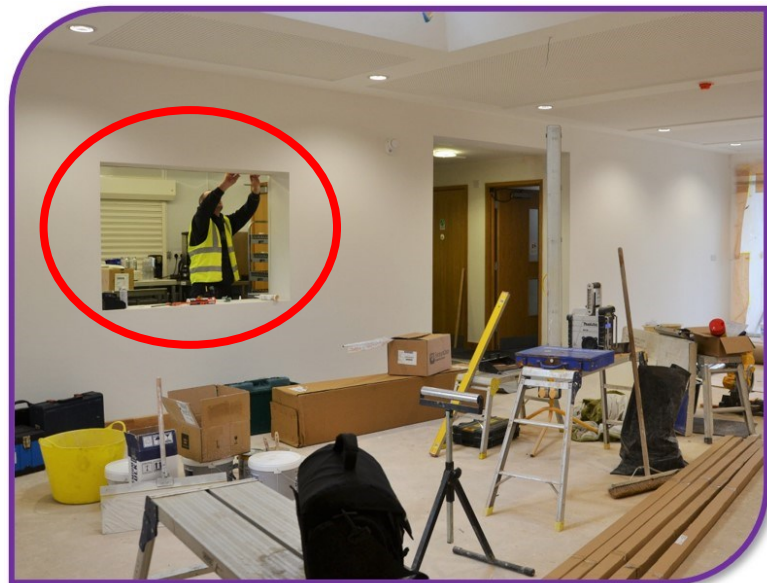
Matthew 16:18, Jesus promises Peter, "On this rock I will build my church, and the gates of hell shall not prevail against it." Soon after that, Christ died and rose from the dead and He has been building his church ever since. Jesus is the only rightful founder and head of the church. We welcomed Elite Signs of Hamworthy to the site this week, to emblazon our name on the front wall. Incorporating the "Roboto" typeface, the set of laser cut, individual letters are made from brushed stainless steel. Brass mounting rods welded to the back of the letters are then glued into the wall. Plastic spacer tubes set the letters 50mm off the wall, to cast lovely shadows when the overhead lighting is switched on. Good work Elite!



Edd from Elite Signs is getting the "B" of Baptist ready for fixing in position.



SHUTTERS UP - Finally, our excellent kitchen can function as it was originally designed, with server hatches now opening onto the foyer, as well as the ground floor lounge. This week we welcomed Apex Security from Southbourne who specialise in the supply of security grilles and shutters. Breaking through that remaining flimsy membrane, the new metal roller shutter was soon installed and functioning. So, it's tea, bourbons and digestives on one side and coffee, choc-chip cookies and jammy dodgers on the other! No more queueing in the link building!



BAPTISTRY The tilers (maybe one is called "Wat"?) from Boden Bau Ltd. have now completed their work on our sunken baptistry and the walls, steps and floor are looking superb. The steel surround is now coated in a bright white painted finish. Did you know the Romans had their mosaic layers deliberately built with tiny mistakes, so visitors could be entertained spotting them? Pop over to the palace at Fishbourne, close to Chichester in West Sussex to play the game for yourself.

